



- bond-buzz free e-newsletter
- product information
- free projects

online
store

what's new • for the cause • clubs • help • contact us

ultimate sweater
machine®

wyr knitr™

embellish-knit!™

cool corder™

pocket knitter™

For the Ultimate Sweater Machine®

Pocketed Short-Sleeve Vest

designed by Kathy Perry



INTERMEDIATE

SIZES: Small (Medium, Large, 1X, 2X)

FINISHED MEASUREMENTS

Chest 38 (42, 46, 50, 54)"/96.5 (106.5, 117, 127, 137) cm

Hips 40 (44, 48, 52, 56)"/101.5 (112, 122, 132, 142) cm

Back length 25 (25, 26, 26, 27)"/63.5 (63.5, 66, 66, 68.5) cm

MATERIALS:

[Ultimate Sweater Machine®](#) [shop now](#)

YARN

[NaturallyCaron.com Country from Caron® International](#) (25% Merino Wool, 75% Microdenier Acrylic): 12 (14, 16, 18, 20) oz (MC), 4 (4, 4, 4, 4) oz (CC)

Shown in: #0015 Deep Taupe (MC) and #0016 Charcoal (CC)

KEY PLATE

USM/ISM KP#2, or appropriate tension setting to obtain gauge
(Suitable for USM/ISM/Bond Classic or 6.5 to 9 mm knitting machine)

ADDITIONAL MATERIALS

Waste yarn (WY)

Four claw weights

Latch tool

Single-prong transfer tool

Two-prong transfer tool



[Click to enlarge image](#)

[Schematic](#)

[Printer Friendly PDF](#)

Send this page to a friend
Enter your friend's e-mail
address:

We will not share or
keep this e-mail address.

Share

Bond America
is a division of

CARON

www.caron.com

Proud sponsor of

Rwanda Knits

www.fiberandcraft.org



Yarn needle
Sewing needle and thread
Five buttons - 7/8" diameter

OPTIONAL (for I-cord)

[Bond America's Embellish-Knit™ Automatic Spool Knitter](#) – OR -
Two double pointed needles, size 6 (4mm)



GAUGE

In Stockinette stitch, 18 sts and 23 rows = 4"/10 cm, using MC
In Moss stitch, 17 sts and 26 rows = 4"/10 cm using CC

SPECIAL TECHNIQUE

I-Cord: May be worked using any of methods below:

Using Embellish-Knit ®: Follow manufacturer's instructions. **Using double pointed needles:** On a double pointed needle, cast on 4 sts; DO NOT TURN. * Slide sts to the opposite end of the needle and knit them, pulling yarn *firmly* behind sts; repeat from * to desired length. After a few rows, you will see that you are knitting a tiny tube; give it a gentle tug now and then to adjust any loose sts. Bind off all sts, leaving a 12" tail for finishing.

On USM: See [Bond Buzz #33](#).

STITCHES USED

Stockinette stitch (St st): Knit side = right side

Twisted edge stitch (multiple of 2 sts)

Row 1: K 1 R, end COR. Using two-prong transfer tool, remove two right edge stitches, twist to left and replace sts on ndls. Place ndls in FWP.

Row 2: Knit.

Repeat Rows 1 and 2, twisting sts every other row.

Moss stitch (multiple of 2 sts + 1)

Row 1: Knit. Reform every other st in row; do NOT reform edge sts.

Row 2: Knit. Reform every other st (alternate sts from previous R).

Repeat Rows 1 and 2 for Moss st.

Eyelet buttonholes (make 2 - band is folded, 2 buttonholes are formed each time.)

Make an eyelet by transferring sts on fifth ndl from each side to ndl on left. Place empty ndls in FWP. Work to next marker. Repeat for remaining buttonholes.

NEEDLES REQUIRED

119 (127, 137, 145, 155)

NOTES

Garment is worked with inserted horizontal pockets, cap sleeves added as back and fronts are worked, moss stitch trim and twisted edge border.

BACK

- Using closed CO Method and CC, CO 91 (101, 109, 119, 127) sts. COR. RC=000.
- K 1 R.

- **Lower Border:** Begin Moss st. Work to RC=008. Reset RC to 000.
- Change to MC and St st. K 3 R.
- **Shape Sides:** Dec 1 st at each side of next row, then every foll 62 (28, 58, 28, 56) rows, 1 (2, 1, 2, 1) time(s)—87 (95, 105, 113, 123) sts rem. RC=066 (060, 062, 060, 060).
- K to RC=080 (080, 082, 082, 082).
- **Shape Cap Sleeves:** CO 16 sts at beg of next two rows—119 (127, 137, 145, 155) sts. **NOTE:** Knit slowly, adding weights to new sts when possible.
- K to RC=138 (138, 144, 144, 148).
- **Neck and Shoulders:** BO center 41 (41, 45, 45, 47) sts for neck—39 (43, 46, 50, 54) sts ea side for shoulders. BO sts ea side or remove to WY for shoulders.

POCKET LININGS (make 2)

- Using WY, CO 27 sts. K 6 R. COR. RC=000.
- Change to MC and K to RC=034.
- K 6 R WY. Set aside to insert in Fronts.

RIGHT FRONT

- Using closed CO Method and CC, CO 41 (45, 49, 53, 57) sts. COR. RC=000.
- K 1 R.
- **Lower Border:** Begin Moss st. Work to RC=008. Reset RC to 000.
- Change to MC and St st. K 3 R.
- **Shape Sides:** Work dec's as for Back on outside edge only (right-hand side);
- **And AT THE SAME TIME,** at RC=016, add pocket lining.
- **Insert Pocket Lining:** See Technique Instructions for *Horizontal Inserted Pockets*, hanging Pocket Lining 8 ndls in from left-hand side—39 (42, 47, 50, 55) sts rem. RC=066 (060, 062, 060, 060).
- K to RC=080 (080, 082, 082, 082).
- **Shape Cap Sleeves:** CO 16 sts at beg of next row (armhole/side edge)—55 (58, 63, 66, 71) sts. **NOTE:** Knit slowly, adding weights to new sts when possible.
- **Shape Neck:** At neck edge, dec 1 st this row, then every 3 rows 7 (1, 5, 2, 4) times, then every 4 rows 8 (13, 11, 13, 12) times—39 (43, 46, 50, 54) sts rem for shoulder.
- K to RC=138 (138, 144, 144, 148).
- BO all sts or remove to WY.

LEFT FRONT

Work as for right Front, rev all shaping.

POCKET BORDERS

- With WS facing, hang 27 sts from WY. COR. RC=000.
- Using CC, K 2 R.
- Begin Moss stitch. Work to RC=008.
- BO.

SLEEVE CUFFS

Note: Cuffs will be turned to RS.

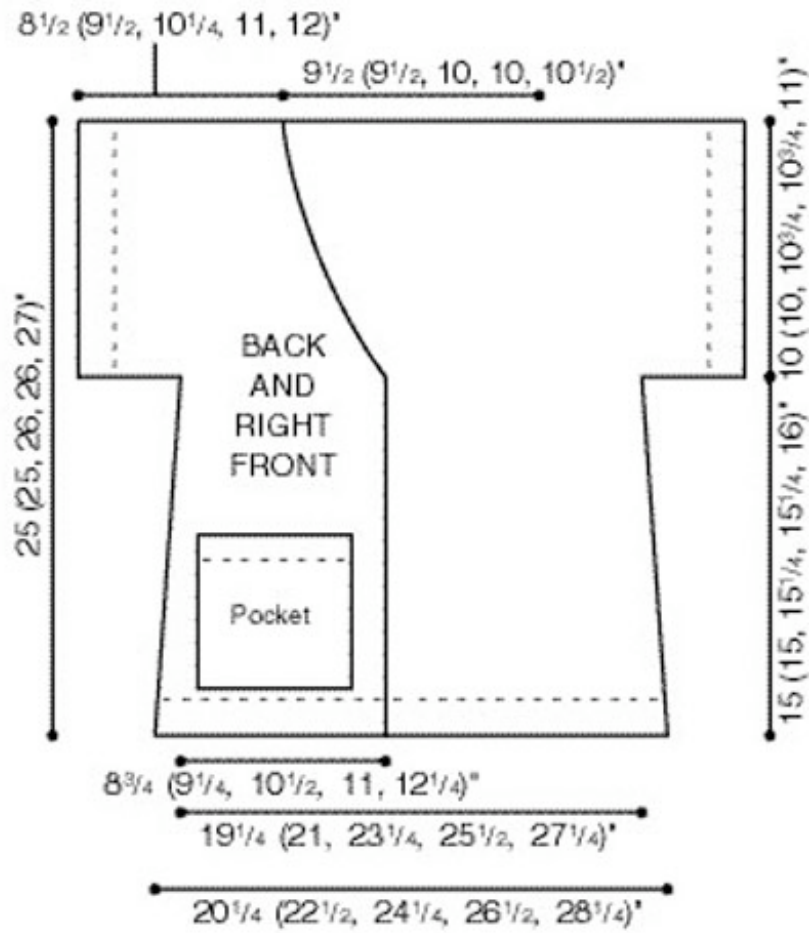
- Join shoulder seams.
- With RS facing, hang sleeve opening on 85 (91, 95, 99, 103) ndls. COR. RC=000.
- Using CC, K 4 R.
- Begin Moss stitch. Work to RC=012.
- BO.

FRONT BAND (made in one piece, starting at lower right Front)

- Using closed CO Method and CC, CO 16 sts. COR. RC=000.
- Begin St st. K 2 R.
- Begin Twisted edge stitch. Work to RC=004.
- **Row 5:** Work set of Eyelet buttonholes.
- Cont as established, working 4 additional buttonhole sets every 20 rows.
- K to RC=352 (352, 362, 368, 378).
- Remove sts to WY.

FINISHING

- Sew side and underarm seams, stopping at cuffs.
- Make an invisible seam on cuffs and turn cuffs to RS. Tack in place with sewing ndl and matching thread.
- Beginning at lower right Front, with RS of Band facing WS of Front, pin Band in place around entire piece, easing to fit as necessary. **Note:** Buttonholes will be attached at right Front. Adjust length of Band if necessary, and BO sts. Sew seam. Fold Band in half, turn to RS and tack in place with sewing ndl and thread. Overcast buttonholes with sewing ndl and thread to reinforce, catching both sides of Band.
- Position and sew buttons in place.
- Using yarn needle, weave in ends.
- **Optional:** Work I-cord and add to pockets, if desired (see photo).
- Block to measurements and steam lightly.



[More projects for the Ultimate Sweater Machine!](#)

bond-buzz • Sign up for Bond-Buzz, our free e-newsletter!

Enter your e-mail address:

[online store](#) • [products](#) • [projects](#) • [what's new](#) • [for the cause](#) • [bond-buzz](#) • [clubs](#) • [help](#) • [contact us](#)

© Caron International 2003-2008