



- bond-buzz free e-newsletter
- product information
- free projects

online
store

what's new • for the cause • clubs • help • contact us

ultimate sweater
machine®

wyr knitr™

embellish-knit!™

cool corder™

pocket knitter™

For the Ultimate Sweater Machine®

Cabled Fabric Jacket

designed by Kathy Perry



TECHNIQUE USED:

Machine knit, with crochet

SIZES

S (M, L, 1X, 2X)

FINISHED MEASUREMENTS

Bust 38 (42, 46, 50, 54)"/96.5 (106.5, 117, 127, 137)
cm

Length 25 (25 1/2, 26, 26 1/2, 27)"/63.5 (65, 66, 67.5,
68.5) cm

MATERIALS:

[Ultimate Sweater Machine®](#) [shop now](#)

YARN

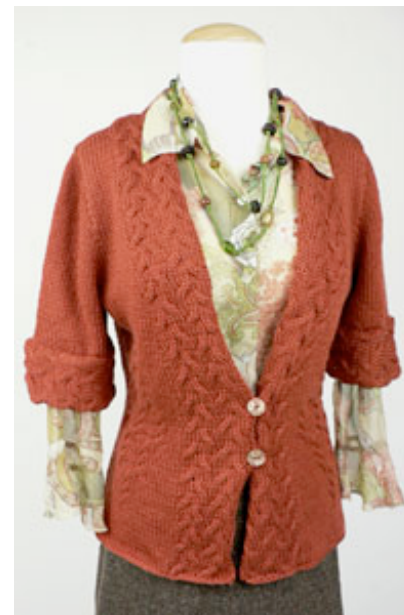
[NaturallyCaron.com Country](#) from Caron®
International (25% Merino Wool, 75% Microdenier
Acrylic): 14 (16, 18, 20, 21) oz
Shown in: #0018 Spice House

KEY PLATE

USM/ISM KP#2, or appropriate tension to obtain gauge
Suitable for USM/ISM/Bond Classic or 6.5 to 9 mm knitting machine

ADDITIONAL MATERIALS

Latch tool
Single-prong transfer tool
Two 2-prong transfer tools
Crochet hook H-8 (5 mm)



[Click to enlarge images](#)

[Schematic](#)

[Printer Friendly PDF](#)

Send this page to a friend
Enter your friend's e-mail
address:

We will not share or
keep this e-mail address.

Share

Bond America
is a division of

CARON

www.caron.com

Proud sponsor of

Rwanda Knits

www.fiberandcraft.org

Yarn needle
Six 3/4" Buttons

GAUGE

In Stockinette stitch, 17 sts and 22 rows = 4"/10 cm
In Cable Fabric stitch, 19 sts and 22 rows = 4"/10 cm

KNIT STITCHES USED

Stockinette stitch (St st): Knit side = RS.

2x2 Left-Cross Cable: Remove 4 selected sts using two 2-prong transfer tools; cross sts and replace on ndls so that left sts are under right sts.

2x2 Right-Cross Cable: Work as above with right sts under left sts.

Cable Panels and Bands – See [Charts and Technique section](#)

CROCHET STITCHES USED

Chain (ch): Begin by making a slip knot on your hook. * Wrap the yarn around the hook (yarn over) and pull up a loop, [draw the yarn through the loop on the hook to form the first chain]. Repeat from * for desired length.

Single Crochet (sc): Insert hook in stitch indicated, yarn over and pull up a loop, yarn over and draw through both loops on hook.

NEEDLES REQUIRED: 84 (92, 100, 110, 118)

BACK

- Using Chain CO Method, CO 84 (92, 100, 110, 118) sts. COR. RC=000.
- K to RC=018 (018, 016, 016, 016).
- **Beg Cable Patt:** Use Jacket Chart for Back, centering cables on both sides of -0- at ndls 16-19 (16-19, 21-24, 21-24, 26-29); and AT THE SAME TIME,
- **Shape Waist:** Dec 1 st ea side this row and every foll 12th R 2 times; inc 1 st on ea side on foll 8th R once and every foll 12th R 2 times. RC=075 (075, 073, 073, 073).
- K to RC=090 (090, 090, 090, 094).
- **Shape Armholes:** BO 4 (4, 5, 5, 6) sts at beg of next 2 R.
- Dec 1 st ea side EOR 8 (10, 11, 13, 14) times—60 (64, 68, 74, 78) sts rem. RC= 108 (112, 114, 118, 124).
- K to RC=126 (130, 132, 134, 138).
- **Shape Neck:** BO center 24 (24, 24, 26, 28) sts for Back neck—18 (20, 22, 24, 25) sts rem ea side for shoulders.
- COR. Place LHS ndls in HP.
- Dec 1 st at neck edge every row 7 (7, 8, 7, 7) times—11 (13, 14, 17, 18) sts rem for shoulder.
- K to RC=136 (138, 142, 144, 146).
- **Shape Shoulders:** At armhole edge, BO 5 (6, 7, 8, 6) sts at beg of next 2 R.
- BO rem sts.
- Repeat Neck Shaping for LHS.

RIGHT FRONT

- Using Chain CO Method, CO 31 (36, 40, 44, 49) sts. COR. RC=000.
- K to RC=018 (018, 016, 016, 016)
- **Beg Cable Patt:** Work as for Back using Chart for Right Front (center cables at -0-); and AT THE SAME TIME,
- **Shape Waist:** Work as for Back at RHS only.
- K to RC=090 (090, 090, 090, 094).
- **Shape Armhole:** Work as for Back at RHS only; and AT SAME TIME at RC=097 (102, 108, 108, 108), beg neck shaping.
- **Shape Neck:** At neck edge, dec 1 st on next R, then every 4 (4, 3, 3, 2) R 6 (8, 7, 7, 5) times, every 10 (0, 4, 9, 5) rows 1 (0, 2, 1, 5) time(s)—11 (13, 14, 17, 18) sts rem for shoulder.
- K to RC=136 (138, 142, 144, 146).
- **Shape Shoulder:** Work as for Back.

LEFT FRONT

Work as for Right Front, reversing all shaping.

SLEEVES

- Using Chain CO Method, CO 56 (62, 66, 70, 74) sts. COR. RC=000.
- K to RC=014.
- **Shape Cap:** BO 4 (4, 5, 5, 6) sts beg next 2 R.
- Dec 1 st ea side ER 1 (2, 2, 3, 4) time(s), EOR 13 (14, 14, 15, 13) times, then ER 1 (2, 2, 2, 4) time(s)—18 (18, 20, 20, 20) sts rem. RC=044 (048, 048, 051, 050).
- BO loosely.
- Mark center of lower edge for placement of Sleeve Band.

SLEEVE BANDS (Make 2)

- Using Chain CO Method, CO 18 sts. COR. RC=000.
- Beg Cable stitch from Bands Chart; work to RC=084 (092, 096, 104, 108).
- BO using Chain st.
- Mark one end for 1 1/2" overlap.

JACKET BAND (Make 1)

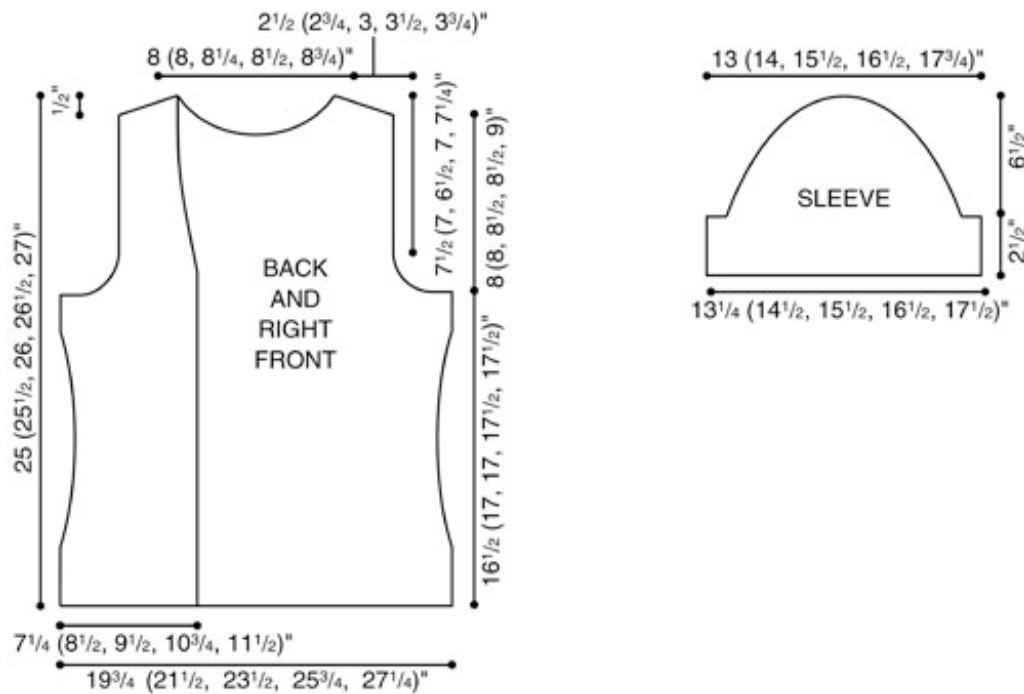
- Using Chain CO Method, CO 18 sts. COR. RC=000.
- Beg Cable stitch from Bands Chart; work to RC=356 (364, 372, 380, 388).
- BO using Chain st.

FINISHING

- Sew shoulder seams. Set in sleeves, easing as necessary.
- Sew sleeve and side seams.
- **Sleeve Bands:** Pin Sleeve Bands to lower edge of Sleeves so that they come together at mark with a 1 1/2" Front to Back overlap; sew Bands in place.

- Sew 2 buttons on ea Sleeve Band (see photo).
- **Jacket Band:** Pin in place around center Fronts and neck shaping; sew seam, easing as necessary.
- Try on Jacket and mark positions for 2 buttons (left-hand side) and 2 buttonholes (right-hand side) at waistline.
- Beg at center Back, work 1 R sc around Jacket. Add button loops on right Front at markers by working 3 ch sts between sc sts, skipping 3 sts under the ch-3.
- Using yarn needle, weave in ends.
- Sew on buttons, opposite loops.

- Steam lightly, being careful not to flatten texture.



[More projects for the Ultimate Sweater Machine!](#)

bond-buzz • Sign up for Bond-Buzz, our free e-newsletter!

Enter your e-mail address:

submit

reset

[online store](#) • [products](#) • [projects](#) • [what's new](#) • [for the cause](#) • [bond-buzz](#) • [clubs](#) • [help](#) • [contact us](#)

© Caron International 2003-2008