



• bond-buzz free e-newsletter
• product information
• free projects

shop online now!

what's new • for the cause • clubs • help • contact us

ultimate sweater machine®

wyr knitr™

embellish-knit™

cool corder™

pocket knitter™

Bond Buzz, Issue #61

April 22, 2010

Free from [Bond America](#)

[printer friendly](#)
[pdf version](#)

Welcome to another issue of Bond Buzz!

So you're getting out in the garden and wishing summer would come along a bit more quickly. And now that you've uncovered all your perennials, you need something to keep you busy 'til they need more tending – and we have just the thing: a super-easy technique that demonstrates how different the double-stranding of sport/dk weight yarns on a machine is compared to the hand-knitted version.

Kathy used a double strand of Spa, ideal for these types of projects, but there are some tips you'll want to know before you start out. Note that you can use up to a double strand of Simply Soft, but that has to be used on every other needle. For this technique, Spa can be used on every needle. Here's how:

Tips & Techniques . . .

Double Yarn Technique

- Using KP 4 and 2 strands of yarn, cast on using the type of yarn and number of stitches called for in pattern instructions and complete as written.
- HINT (and this is important!): Put a piece of tape across the eye of the carriage to prevent one of the yarns from coming out. Push the carriage across row slowly and, as you work, check to be sure both strands of yarn were knitted in. Extra claw weights may be needed so that your stitches form correctly.



click to enlarge



You will notice that the patterning created using this technique is quite different, much less like a tweed or marle and more like

Send Bond-Buzz to a friend

Enter your friend's e-mail address:

We will not share or keep this e-mail address.

Share

Bond America is a division of

CARON

www.caron.com

Proud sponsor of

Rwanda Knits

www.fiberandcraft.org

www.fiberart.org



[click to enlarge](#)

random intarsia. This happens because, when using a machine, the yarns are laid into the needles, causing them to twist much less than when hand knitting. I find the resulting patterning quite interesting and hope you will too.

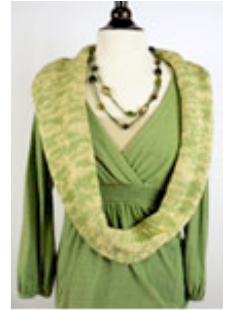
INFINITY SCARF

designed by Kathy Perry



FINISHED SIZE

Approx 14" wide x 58" long /35.5 cm x 147.5 cm (before joined into a circle) [click to enlarge](#)



YARN

[Naturallycaron.com Spa](http://Naturallycaron.com) (75% Microdenier acrylic, 25% Rayon from Bamboo; 3 oz/85 g, 251 yds/230 m ball):

6 oz.each. Shown in: #0003 Soft Sunshine and #0004 Green Sheen used together (MY)

KEY PLATE

USM/ISM KP#4 or appropriate tension to obtain gauge

Suitable for USM/ISM/Bond Classic or 6.5 to 9 mm knitting machine

ADDITIONAL MATERIALS

Claw weights

WY

Yarn needle

I-9 (5.5 mm) crochet hook

GAUGE

In Stockinette stitch with KP 4 and 2 strands of yarn used together, 14 sts and 18 rows = 4"/10 cm

Knit Stitches Used

Stockinette stitch (St st)

Crochet Stitches Used

Sc

Reverse single crochet

Reverse Single Crochet

Do not turn the work. Chain one; *insert hook into next stitch to the right and pull up a loop (angling hook down). Yarn over and pull through both loops on hook. Rep from * across row.

NEEDLES REQUIRED 50

SCARF

- Using WY, CO 50 sts. K 6 R. Break off. Change to MY. COR. RC=000. See technique instructions.
- K to RC=260. Do not cut yarns.
- Change to WY and K 6 R. Remove work.
- Seam: Turn piece over and re-hang MY sts on machine with RS facing front. Hang other end on top with WS facing front. K 1 R slowly and BO back stitch.

FINISHING

- Using color of your choice, add 1 R sc and then 1 R reverse single crochet to each side.
- Steam crochet edges very lightly to lay flat.

And when summer's over, you can wear the scarf doubled for real warmth – and total comfort!



[click to enlarge](#)

Free Pattern . . .

Double Strand Kimono Jacket

Just when you thought it was summer and in the 80s, there's a cool night and you hunt for something really soft but also snuggly to wear out. But you just happen to have knitted up Kathy Perry's [Kimono Jacket](#) in a double strand of Spa. Super soft to wear over that cami and warm enough to get you from the car to the restaurant—or to wear dining alfresco.

Enjoy!





Cari Clement
[Bond America](#)

P.S. As a subscriber to Bond-Buzz, I'd like to invite you to subscribe to the FREE e-mail newsletter—[Caron Connections](#) from Caron® International. Just visit the [Caron site \(http://www.caron.com\)](http://www.caron.com) and enter your email address. It's that easy. As a subscriber to Caron Connections, you'll receive monthly emails filled with the latest inside scoop on Caron's new fashion yarns and free patterns.

b o n d - b u z z • Sign up for Bond-Buzz, our free e-newsletter!

Enter your e-mail address:

[online store](#) • [products](#) • [projects](#) • [what's new](#) • [for the cause](#) • [bond-buzz](#) • [clubs](#) • [help](#) • [contact us](#)

© Caron International 2003-2010