



- bond-buzz free e-newsletter
- product information
- free projects

shop
online
now!

what's new • for the cause • clubs • help • contact us

ultimate sweater
machine®

wyr knitr™

embellish-knit!™

cool corder™

pocket knitter™

Bond Buzz, Issue #59

February 17, 2010

Free from [Bond America](#)

[printer friendly](#)
[pdf version](#)

Welcome to another issue of Bond Buzz!

It's such a pleasure to once again be working with Kathy Perry, USM-knitter extraordinaire! We got together before the CHA trade show and mapped out our Buzz features for this year – all really different and new. So tell your machine-knitting friends to be sure to subscribe!

In December, Kathy sent me a photo of a wonderful pillow she had done using the scalloped edge technique. It was so interesting, but looked challenging to knit on the machine. Not so, said Kathy. So here we go.....

Tips & Techniques . . .



[click to enlarge](#)

Scalloped Edge Technique

Transfers, eyelets and re-formed (aka converted) stitches work to form a scalloped design for the beginning edge of a project. (Re-formed or converted = using latch tool, drop down one row and latch up the stitch to change the purl st to a knit st (facing you).) One 3-prong tool is used in this technique. Kathy also used a ½" wide ribbon to weave through the eyelets at the top of the scallop and decorative buttons to accent the stitch and hold the flap down on the pillow.

This technique is a multiple of 8 sts plus 7.

Step 1: Using closed CO Method, CO desired sts. (Our sample was 31 sts) COR. RC=000.

Step 2: Rows 1 & 2: K. Re-form all sts of Row 2:

Step 3: Rows 3 & all odd-numbered rows: Working from the center of the out, follow chart. Use a 3-prong tool for all transfers except the third from the ends which require using a 1-prong tool. Note that I wanted to see how additional rows would look, so I did 4 additional rows beyond the chart, which you can also do depending on the look you want. NOTE: The order in which you transfer



Send Bond-Buzz to a
friend
Enter your friend's e-mail
address:

We will not share or
keep this e-mail address.

Share

Bond America
is a division of

CARON

www.caron.com

Proud sponsor of

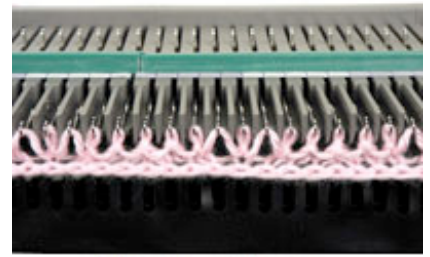
Rwanda Knits

www.fiberandcraft.org

the two stitches to the center needle is not important.

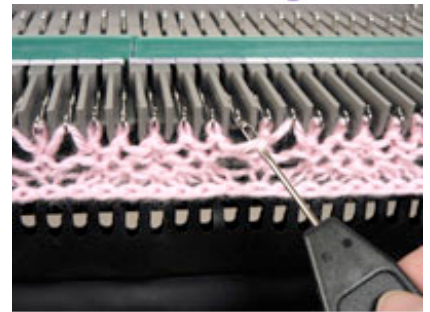
[click to enlarge](#)

Step 4: Rows 4 and all even numbered rows: Put empty ndls in WP with latches open after transfers have been made and knit row slowly.



[click to enlarge](#)

If a stitch missed an open needle, just lift the yarn strand up from the row just knitted and place it in the hook of the empty needle.



[click to enlarge](#)

TIP: Before working the transfers, bring all needles in WP slightly forward so the stitches open the latches but do not go behind them. Push ndls back to WP.

Step 5: Complete project as desired. I knitted an additional 76 rows, as I know a certain “fancy girl” who would love a pink purse with a glittery ribbon and sparkly buttons on it..... Make those technique practice swatches work for you!!

I also thought you might want to see what the technique looks like when you’ve removed your work from the machine, both before you’ve removed the hem and after. Quite a difference!



[click to enlarge](#)



[click to enlarge](#)

SCALLOPPINI PILLOW

designed by Kathy Perry



**FINISHED SIZE**

10" square/25.5 cm square

YARN

[Caron International's Simply Soft®](#) (100% acrylic, 6oz/170g, 315yds/288m): 3 ounces

Shown in: #9721 Victorian Rose and #9608 Blue Mint.



[click to enlarge](#)

KEY PLATE

USM/ISM KP#2.5 or appropriate tension to obtain gauge

Suitable for USM/ISM/Bond Classic or 6.5 to 9 mm knitting machine

ADDITIONAL MATERIALS

Latch tool

Single-prong transfer tool

3-prong transfer tool

10" pillow form

Yarn needle

Pins, sewing needle and thread

5-6 buttons

12" of 1/2" ribbon

GAUGE

In Stockinette stitch, using a #2.5 keyplate: 17 sts and 22 rows = 4"/10 cm

STITCHES USED

Scalloped edge (See technique instructions)

Stockinette stitch (St st)

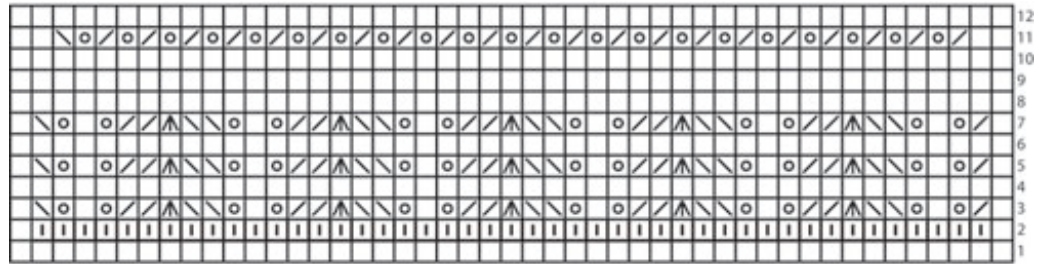
NEEDLES REQUIRED 47**PILLOW** (knitted in one piece)

- Using closed CO Method, CO 47 sts. COR. RC=000.
- Follow technique instructions to complete edge. RC=012.
- K to RC=127.
- BO back stitch.

FINISHING

- Weave in ends.
- Fold piece so that scalloped edge overlaps BO edge by 2". (Edge can be centered or offset.) Pin, baste and tack together.
- Sew buttons following picture for a "buttoned up" look.
- Weave ribbon in and out of row of eyelets and secure ends. Pin sides so you have a 10" square.
- Remove pins on one side and use mattress stitch to sew seam. Add pillow form and

complete rem side seam in same way.



- Empty square
- Square with vertical line
- Square with circle
- Square with diagonal line (top-left to bottom-right) = Transfer stitch to right
- Square with diagonal line (top-right to bottom-left) = Transfer stitch to left
- Square with triangle = 3 stitches on one needle

Free Pattern . . .

Scalloped Edge Baby Blanket

Use your new-found technique skills and make this wonderful [scalloped-edge baby blanket](#). Accent it with your choice of ribbon and you have it! Or make a wrap using the same technique and pattern, but use fewer stitches and make it a bit longer.

Enjoy!

Cari Clement
[Bond America](#)



P.S. As a subscriber to Bond-Buzz, I'd like to invite you to subscribe to the FREE e-mail newsletter—[Caron Connections](#) from Caron® International. Just visit the [Caron site](http://www.caron.com) (<http://www.caron.com>) and enter your email address. It's that easy. As a subscriber to Caron Connections, you'll receive monthly emails filled with the latest inside scoop on Caron's new fashion yarns and free patterns.

b o n d - b u z z • Sign up for Bond-Buzz, our free e-newsletter!

Enter your e-mail address:

[online store](#) • [products](#) • [projects](#) • [what's new](#) • [for the cause](#) • [bond-buzz](#) • [clubs](#) • [help](#) • [contact us](#)

© Caron International 2003-2010